



TRITON
Advanced Search

Revolutionary



PLANET

After decades of stagnation in the development of washings systems is born in Triton the solution to the needs of washing individual pieces at high production rate

- Deals with a piece at a time satisfying high cadences
- Continuously moves the piece for a quick and effective cleaning of even complex shapes and in the presence of chip
- Wash in immersion with hydro kinetic action
- Return the items with lvery ow residual moisture.
- It is compatible with the last generation of rinse free detergents
- The pieces are contained in plastic cylinders to save delicate points. No more ruined threads, flattened corners, dented surfaces.
- Collaborate with the production machine waiting for the pieces and adjusting the frequency accordingly
- No cost of labor, loading and unloading are automatic.
- Available with 6 or 10 satellites for a perfect adaptation to the washing needs

It is completely built in stainless steel AISI 304 with a particular focus to the aesthetics through the appropriate use of satin stainless steel. Equipped with external insulation made of mineral wool mattresses 40 mm and upper cabin with fold down front door for the inspection.

The tank is equipped with:

- Portholes for cleaning, made of stainless steel AISI 304
- Ball valve for unloading tank
- Level switch with electrical contacts
- Solenoid valve for the automatic level
- Electrical resistors made of stainless steel AISI 304 for heating of the solution,

La tavola rotante porta-satelliti, realizzata in acciaio Inox AISI 304 è sostenuta da un motoriduttore a vite senza fine, direttamente calettato sull'asse di rotazione. La tavola ruota a passi, comandata da un altro motoriduttore, ingranato direttamente alla tavola rotante.

I satelliti porta pezzi cilindrici, montati sulla tavola, sono realizzati in materiale plastico ad alta resistenza e sono forati sul mantello.

Il quadro elettrico integrato comandi comprende:

- interruttore generale
- PLC con display a cristalli liquidi touch screen per lettura e impostazione parametri, e per comandi manuali dei dispositivi macchina



5 MODELS

- **PLANET 100/6**
- **PLANET 100/10**
- **PLANET 150/6**
- **PLANET 150/10**
- **PLANET 200/6**

Triton Advanced search srl

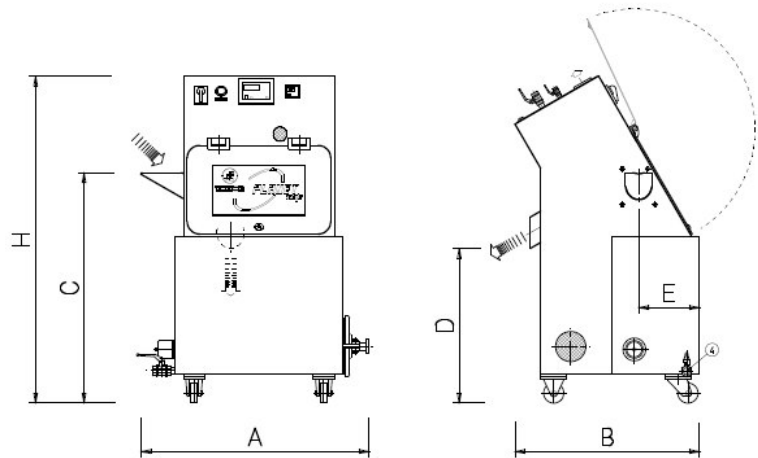
Via Alessandrina, 49
20037 Paderno Dugnano
Milano ITALY

Tel.: +39 029180676
Fax: +39 029181229
E-mail: triton@triton.it



TRITON
Advanced Search

Compact



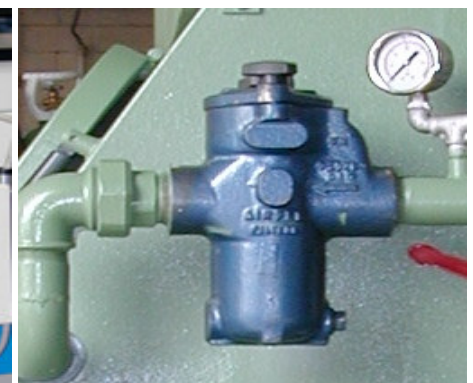
PLANET

Dimensions

Model	Satellite dimension	A	B	C	D	E	H
100/6	Ø 100 x L. 100	865	730	920	615	240	1300
100/10	Ø 100 x L. 100	1100	900	1200	800	340	1600
150/6	Ø 150 x L. 150	1100	900	1200	800	340	1600
150/10	Ø 150 x L. 150	1340	1050	1340	840	420	1680
200/6	Ø 200 x L. 200	1340	1050	1340	840	420	1680

Technical data

Model	100/6	100/10	150/6	150/10	200/5
Voltage	V.400	V.400	V.400	V.400	V.400
Kw installed	Kw 10	Kw 17,5	Kw 17,5	Kw 22,5	Kw 22,5
Power consumed when running	Kw/h 7	Kw/h 12	Kw/h 12	Kw/h 16	Kw/h 16
Suggested stepping time	6"±10"	4"±6"	6"±10"	4"±6"	5"±7"
Compressed air need	5 bar	5 bar	5 bar	5 bar	5 bar



Triton Advanced search

Via Alessandrina, 49
20037 Paderno Dugnano
Milano ITALY

Tel.: +39 029180676
Fax: +39 029181229
E-mail: triton@triton.it